



CERAMIC FURNITURE

TECHNICAL INFORMATION

MATERIAL

Produced starting from a mixture of noble clay compacted at high pressure and sintered* at 1250 °C.

* Sintering: production method which consists in subjecting the powdered material to a heat treatment carried out at a high temperature but lower than the melting point of the material.

Porcelain of the group B1a, according to the requirements of the NORM EN 14411/ISO 13006 annex g.

6 mm thickness + / - 0.2 mm. Satin finish.
UPEC classification for size 75 x 75: U4P3 - E and C certification in progress.
U = usury / abrasion
P = punching by a fixed load or falling object
E = water / moisture
C = chemical agents

In accordance with international standards UNI in force:

- UNI EN ISO 10545.2: tolerance of size and surface quality.
- UNI ISO 10545.3: water absorption.
- UNI ISO 10545.8: linear thermal expansion.
- UNI ISO 10545.9: thermal shock resistance.
- UNI ISO 10545.12: resistance to frost.
- UNI ISO 10545.13: chemical resistance.
- UNI ISO 10545.14: stain resistance.

And according to DIN 51094: colour resistance to light.

Management monitoring of these characteristics certified UNI EN ISO 9001/2008.
Environmental management system UNI EN ISO 14001 and system for eco-management in accordance to 1221/2009-EMAS III requirements of regulation.

Shown products or provided samples can not be considered as specific reference of colour and aspect.

Each reference is composed of several "mother slabs" whose "printed" drawings are voluntarily different from one slab to another.

A guarantee of loyalty to the exposed product or to the samples is therefore impossible. No restocking is possible.

The photos of the different "mother slabs" are visible on our web site.

By extendable tables, extensions are usually obtained from another slab; the continuity of the "drawings" and the same color can not be guaranteed.

We do not guarantee exact restocking.

Cuts (open portions) on ceramic top for desk grommets are possible at 68 € public price. Contact us for position of cuts.

Characteristics :

Ceramic 01 écume, 02 silex, 03 carbone, 30 pearl, 31 greige, 32 blade, 33 corten et 50 urban dark :
those marks similar to "scratches" are an integral part of the "printed" decoration in ceramics, it is not a manufacturing defect.
Each slab of one series is different from the others, see the photos on our web site.

Ceramic 18 quartz and 19 onyx grey :
The decoration of these ceramics reproduces the exact appearance of travertine with the nuances of the original stone.

Ceramic 20 ardoise:
This ceramic imitates slate with typical slate reliefs, sometimes inconspicuous on the sample.

Ceramic 22 black venato, 23 eramosa, 25 breccia:
The decoration of these ceramics reproduces the exact appearance of these three marbles with the nuances and drawings of the original stones.
Each slab is different from the others, see the photos on our web site (without engagement).
No sample supply for these references. A sample cannot be representative of the overall look of the piece of furniture.

Ceramic 24 steel :
This ceramic imitates an oxidized steel plate with decoration differences on the entire large original slab.
Each slab of one series is different from the others, see the photos on our web site.
No sample supply for these references. A sample cannot be representative of the overall look of the piece of furniture.

• Superficial reliefs or hollows, smaller than 1 mm may be present and must be accepted. These are peculiar characteristics of large ceramic slabs. More matt or glossy areas are part of the decoration as well as differences of designs from one area to the other on the large original slab.

• The matt / satin ceramics are almost scratch-proof. Glossy finishes are more sensitive, a careful use is recommended.

• It does not change color, it does not rust, UV resistant.

• It does not bend.

• Easy to clean.

• Hygienic, it is used for work surfaces of sterilised laboratories.

• Waterproof, so resistant to any kind of spots within a normal domestic use.

• Resistant to common household chemicals.

• Resistant to fire and frost.

• Does not make any organic substance in the environment.

• Product with 100% natural ingredients.

MAINTENANCE - CAUTIONS

Every day, clean with a wet microfiber cloth without detergents.

All current household cleaning products can be used.

Ceramics are harder than most materials, however on matt / satin finishes, rubbing metal or other objects can leave a deposit of material by abrasion. To remove it, use liquid CIF or equivalent with a sponge. ScotchBrite can be used carefully, intensive rubbing can generate a brighter area.

For glossy finishes, the scratches can be hidden by using the product Akemi-Crystal Clean (www.akemi-france.fr)

• Ceramic is extremely strong but you must use some precautions and care especially regarding possible shocks on the edges and corners. General resistance to the shock is identical to that of glass.

• Avoid to put extremely hot dishes directly on the surface, the ceramic is not sensitive to heat but we can not exclude the possibility of a thermal shock.

• Remember that ceramic is a fragile material, take it into account in everyday use.

• Use furniture exclusively for its original function.

• Do not sit or stand on the table; there is a risk of breakage.

• Never lift the table taking it by the ceramic top; imperatively use the sliding bars of handling; see the instructions. In case of coffee table, lift it by the base.



CERAMIC FURNITURE

COLORS 1/2

Exposed products or provided samples may not be considered as an exact reference of colour or a specific aspect. By natural materials it is technically impossible to have and therefore to assure a loyalty to samples. No precise restocking is guaranteed.

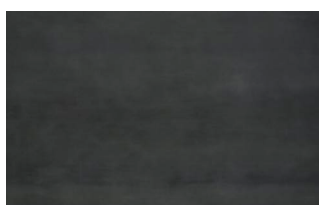
TRISS COLLECTION



01 ECUME
Size 300 x 150 cm max



02 SILEX
Size 300 x 150 cm max



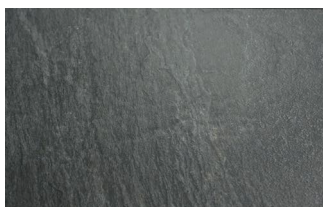
03 CARBONE
Size 300 x 150 cm max



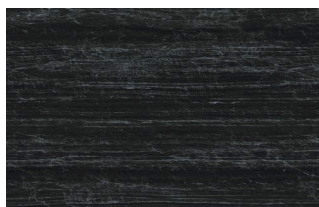
18 QUARTZ
Size 320 x 160 cm max



19 ONYX GREY
Size 320 x 160 cm max



20 ARDOISE
Size 320 x 160 cm max



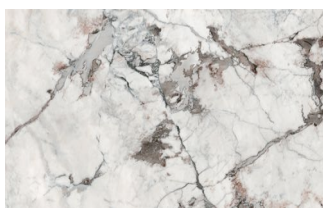
22 BLACK VENATO
Size 300 x 150 cm max



23 ERAMOSA
Size 300 x 150 cm max



24 STEEL
Size 320 x 160 cm max



25 BRECCIA
Size 240 x 120 cm max



30 PEARL
Size 320 x 160 cm max



31 GREIGE
Size 320 x 160 cm max



32 BLADE
Size 320 x 160 cm max



33 CORTEN
Size 320 x 160 cm max



40 BLANC ABSOLU
Size 320 x 160 cm max



41 NOIR ABSOLU
Size 320 x 160 cm max



50 URBAN DARK
Size 320 x 160 cm max

N.B. : No sample supply for references 22 Black Venato, 23 Eramosa, 24 Steel, 25 Breccia, 30 Pearl, 31 Greige, 32 Blade, 33 Corten, 40 Blanc absolu, 41 Noir absolu et 50 Urban dark.
A sample cannot be representative of the overall look of the piece of furniture.

OTHER COLLECTIONS NEXT PAGE

OUR ADVICE FOR USE AND MAINTENANCE, WRITTEN OR ORAL, BASED ON OUR EXPERIENCE AND OUR BEST KNOWLEDGE, IS HOWEVER GIVEN WITHOUT ENGAGEMENT FROM OUR PART. TERMS OF USE THAT WE DO NOT CONTROL EXCLUDE ANY LIABILITY OF OURS. WE ASK YOU TO CHECK IF THE PRODUCT IS REALLY SUITABLE FOR THE CONSIDERED USE. SINCE THE PUBLIC MARKETING AND USE OF THE PRODUCT ARE CARRIED OUT OUTSIDE OUR CONTROL, THE SOLE RESPONSIBLE IS THE USER OR THE DISTRIBUTOR. IF, DESPITE ALL, OUR LIABILITY COMES TO BE CALLED IN QUESTION, IT WILL BE LIMITED TO THE VALUE OF THE GOODS THAT WE HAVE DELIVERED. EXPOSED PRODUCTS OR PROVIDED SAMPLES MAY NOT BE CONSIDERED AS AN EXACT REFERENCE OF COLOR OR A SPECIFIC ASPECT. NATURE AND FINISH OF THIS MATERIAL MAKE TECHNICALLY IMPOSSIBLE A GUARANTEE LOYALTY TO THE SAMPLES OR TO EXPOSED PRODUCTS AS WELL AS THE EXACT COLOR FROM ONE PRODUCTION LOT TO ANOTHER. NO PRECISE RESTOCKING IS THEREFORE GUARANTEED.

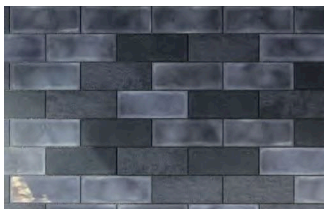


CERAMIC FURNITURE

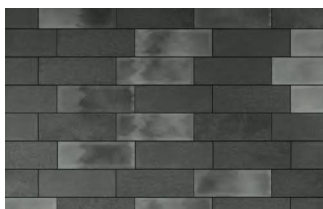
COLORS 2/2

Exposed products or provided samples may not be considered as an exact reference of colour or a specific aspect. By natural materials it is technically impossible to have and therefore to assure a loyalty to samples. No precise restocking is guaranteed.

DIESEL COLLECTION FOR CABINET DOORS ONLY



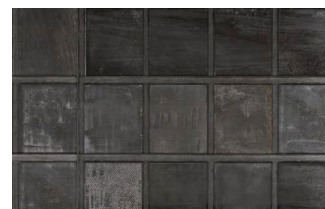
ARMY CAMP COL. BLUE



ARMY CAMP COL. BLACK



INDUSTRIAL GLASS COL. GREY



RIBBED COL. BLACK

DIESEL COLLECTION FOR COFFEE TABLE TOPS ONLY



ARIZONA CONCRETE
COL. ANTHRACITE SMOOTH
Size 120 x 60 cm only



METAL PERF
COL. DARK BRASS LUCIDATO
(MLDB)
Size 120 x 60 & 60 x 60 cm only

N.B. : No sample supply for Diesel collection.
A sample cannot be representative of the overall look of the piece of furniture.